

10.2.2 64-pin QFN

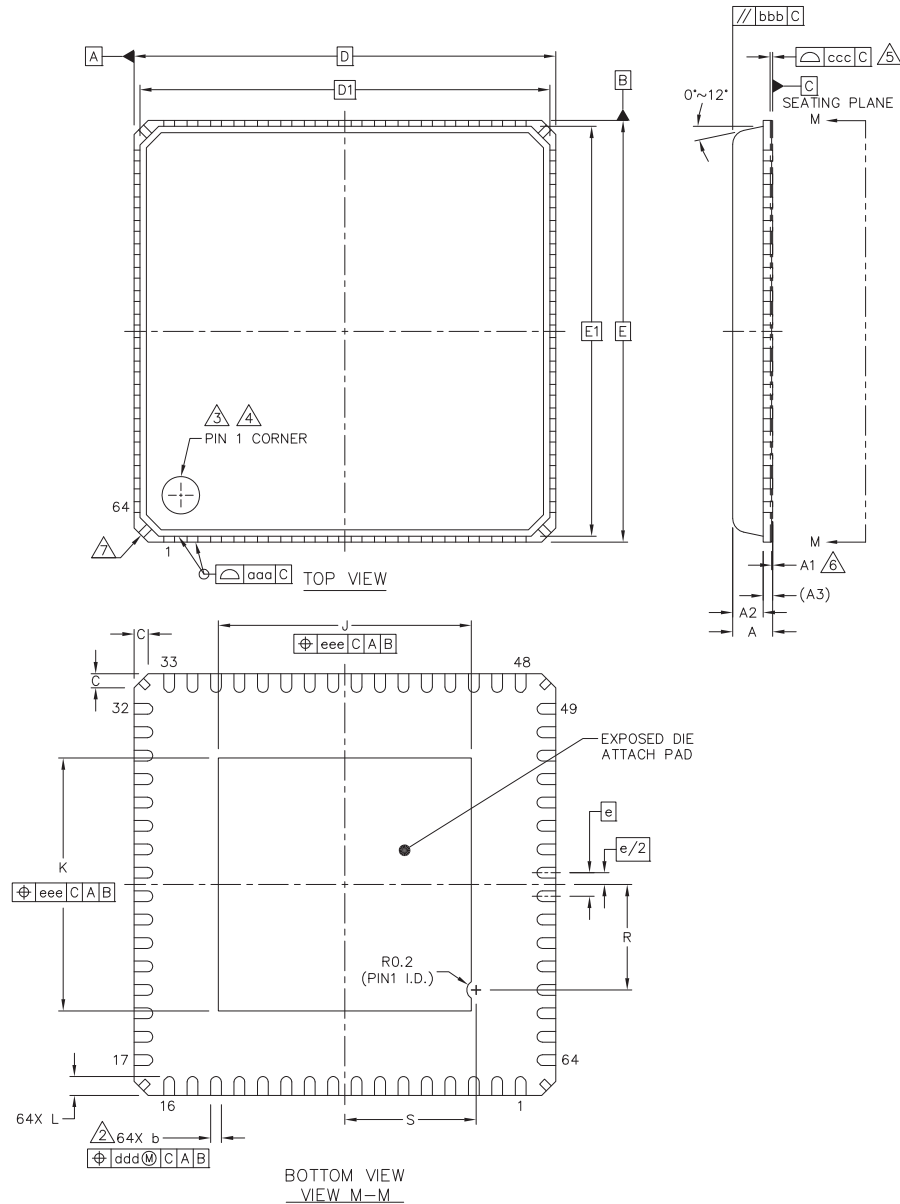


Figure 10-5: 64-pin QFN package dimensions

		SYMBOL	MIN	NOM	MAX
TOTAL THICKNESS		A	0.8	0.85	0.9
STAND OFF		A1	0	0.02	0.05
MOLD THICKNESS		A2	0.65	---	0.69
L/F THICKNESS		A3	0.203 REF		
LEAD WIDTH		b	0.18	0.23	0.28
CHAMFER		C	0.24	---	0.6
BODY SIZE	X	D	9 BSC		
	Y	E	9 BSC		
MOLD CAP	X	D1	8.75 BSC		
	Y	E1	8.75 BSC		
LEAD PITCH		e	0.5 BSC		
EP SIZE	X	J	5.3	5.4	5.5
	Y	K	5.3	5.4	5.5
LEAD LENGTH		L	0.3	0.4	0.5
		R	2.15	2.25	2.35
		S	2.7	2.8	2.9
PACKAGE EDGE TOLERANCE		aaa	0.1		
MOLD FLATNESS		bbb	0.08		
COPLANARITY		ccc	0.05		
LEAD OFFSET		ddd	0.1		
EXPOSED PAD OFFSET		eee	0.1		

NOTES

1. DIE THICKNESS ALLOWABLE IS 0.305mm MAXIMUM (.012 INCHES MAXIMUM)
- ② DIMENSION APPLIES TO PLATED TERMINAL AND IS MEASURED BETWEEN 0.2 AND 0.25mm FROM TERMINAL TIP.
- ③ THE PIN #1 IDENTIFIER MUST BE PLACED ON THE TOP SURFACE OF THE PACKAGE BY USING INDENTATION MARK OR OTHER FEATURE OF PACKAGE BODY.
- ④ EXACT SHAPE AND SIZE OF THIS FEATURE IS OPTIONAL.
- ⑤ APPLIED FOR EXPOSED PAD AND TERMINALS. EXCLUDE EMBEDDING PART OF EXPOSED PAD FROM MEASURING.
- ⑥ APPLIED ONLY TO TERMINALS.
- ⑦ EXACT SHAPE OF EACH CORNER IS OPTIONAL.

Figure 10-6: 64-pin QFN package dimensions